



NUMBER: 18-005-02 REV. A

GROUP: Vehicle Performance

DATE: May 6, 2002

This bulletin is supplied as technical information only and is not an authorization for repair. No part of this publication may be reproduced, stored in a retrieval system, or transmitted, in any form or by any means, electronic, mechanical, photocopying, or otherwise, without written permission of DaimlerChrysler Corporation.

THIS BULLETIN IS BEING PROVIDED IN ADVANCE. THE MDS2 MUST BE OPERATING WITH CIS OR ISIS CD2108 OR HIGHER, AVAILABLE IN DOMESTIC MARKET MAY 27, 2002.

THIS BULLETIN SUPERSEDES TECHNICAL SERVICE BULLETIN 18-005-02, DATED FEBRUARY 11, 2002, WHICH SHOULD BE REMOVED FROM YOUR FILES. ALL REVISIONS ARE HIGHLIGHTED WITH **ASTERISKS** AND INCLUDE MODELS AND MODEL YEARS ADDRESSED, INTERNATIONAL APPLICATION, A NEW CALIBRATION, A NEW PART NUMBER FOR THE "AUTHORIZED MODIFICATIONS" LABEL AND ADDITION OF THE "AUTHORIZED SOFTWARE UPDATE" LABEL FOR INTERNATIONAL APPLICATIONS.

SUBJECT:

Vehicle Performance Enhancements

OVERVIEW:

This bulletin involves selectively erasing and reprogramming the JTEC Powertrain Control Module (PCM) with new software (01Cal19).

MODELS:

- 2001 (TJ) Wrangler
2001 (WJ/WG) Grand Cherokee

NOTE: THIS BULLETIN APPLIES TO 2001 (TJ) JEEP WRANGLERS AND (WJ/**WG) GRAND CHEROKEES** EQUIPPED WITH A 4.0L ENGINE AND CALIBRATION LEVEL PRIOR TO 01CAL19.

SYMPTOM/CONDITION:

Some vehicles may exhibit one or both of the following conditions:

- 1. Rough idle after a cold start up.
2. "Tip out" driveline clunk immediately following a closed throttle (manual transmission equipped only.)

PARTS REQUIRED:

Table with 3 columns: Qty., Part No., Description. Rows include parts for software updates and modifications.

EQUIPMENT REQUIRED:

CH6000	Scan Tool (DRBIII®)
CH7035	General Purpose Interface Bus Cable (GPIB)
CH7000/7001	J1962 Cable
	MDS2 (Mopar Diagnostic System)

REPAIR PROCEDURE: DOMESTIC

1. Connect a Battery Charger and set as close to 14 volts charge as possible.
2. Flash the controller using the MDS2 (Mopar Diagnostic System) and DRBIII®.

NOTE: DUE TO THE PCM REPROGRAMMING PROCEDURE, A DTC MAY BE SET IN OTHER MODULES (EATX, BCM, MIC, SKIM, ETC.) WITHIN THE VEHICLE, IF SO EQUIPPED. SOME DTC'S MAY CAUSE THE MIL TO ILLUMINATE. ALL DTC'S RELATE TO A LOSS OF COMMUNICATIONS WITH THE MODULE THAT IS BEING REPROGRAMMED. CHECK ALL MODULES, RECORD THE FAULTS, AND ERASE THESE FAULTS PRIOR TO RETURNING THE VEHICLE TO THE CUSTOMER. ERASE ANY FAULTS IN THE PCM ONLY AFTER ALL OTHER MODULES HAVE HAD THEIR FAULTS ERASED.

NOTE: THE FOLLOWING STEPS ARE REQUIRED BY LAW.

3. Type the necessary information on the "Authorized Software Update Label" p/n 04669020 (Fig. 1). Attach the label to the PCM and cover the label with the clear plastic overlay.

CHRYSLER CORPORATION

P/N:

DLR CODE:

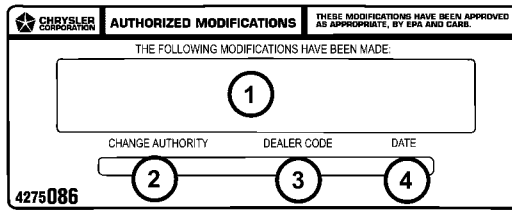
DATE:

AUTHORIZED SOFTWARE UPDATE

80bb0a94

Fig. 1 AUTHORIZED SOFTWARE UPDATE LABEL

4. Type the necessary information on the "Authorized Modification Label" p/n **04275086AB** and attach the label near the VECI label (Fig. 2).



80bb0af8

Fig. 2 AUTHORIZED MODIFICATION LABEL

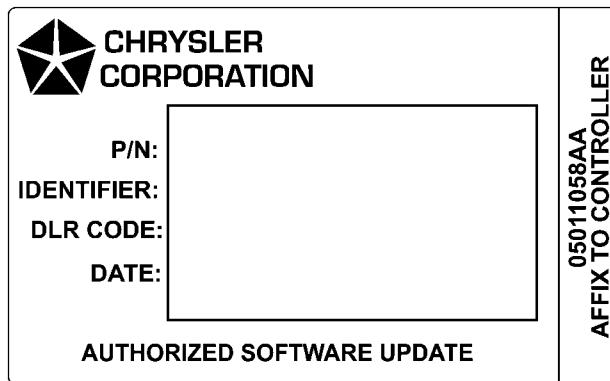
- 1 - POWERTRAIN CONTROL MODULE P/N (INSERT P/N) USED
- 2 - CHANGE AUTHORITY: TSB XX-XX-XX
- 3 - DEALER CODE: XXXXX
- 4 - DATE: XX-XX-XX

REPAIR PROCEDURE: INTERNATIONAL

1. Update the DRBIII® (with or without a card) using the Make Flash Card Update Program.
2. Follow the instructions on the DRBIII® screen and update the PCM.

NOTE: THE FOLLOWING STEP IS REQUIRED BY LAW.

3. Type the necessary information on the “Authorized Software Update Label” p/n 05011058AA. Attach the label to the PCM and cover the label with the clear plastic overlay (Fig. 3).



80c810d2

Fig. 3 AUTHORIZED SOFTWARE UPDATE LABEL

ENGINE	IDENTIFIER
4.0L	WBSBB

POLICY:

Reimbursable within the provisions of the warranty.

TIME ALLOWANCE:

Labor Operation No:	Description	Amount
08-19-40-99	Reprogram Powertrain Control Module	0.5 Hrs.

FAILURE CODE:

FM	Flash Module
----	--------------